

About Morrow County

Morrow County is located in Central Ohio, just north of Columbus. It's ideally located for *commercial* and *industrial development*:

- Two shovel-ready commercial and industrial parks
- Two major interchanges and direct access to U.S. 42 and U.S. 23
- A labor force of 1.2 million within 40 minutes
- Tax and enterprise zone incentives
- Airport that accommodates aircraft up to and including small turbo-prop planes
- Favorable real property tax rates; no personal property taxes in Ohio
- Close to it all: Ohio cities, recreation and sporting areas

With a population of 35,000, we're proud of our county's rural lifestyle and an agriculture industry over \$50-million. In addition, we value the county's diverse manufacturing firms that include Cardington Yutaka Technologies (supplier to Honda of America) and Core Systems (plastic injection molding parts). We're also home to Mount Gilead State Park, Mid Ohio Sports Car Course and the Cardinal Center Campground Trapshooting Facility.

We welcome the opportunity to help you open or expand a commercial or industrial business. Please contact Economic Development Director **Patricia Davies** at 419.947.7535 or daviesp@rr.ohio.com.

Morrow County Development Office

80 N. Walnut Street, Suite B
Mt. Gilead, Ohio 43338
419.947.7535 *talk* 419.947.7686 *fax*

MORROW COUNTY
Love life. Live rural.

Opportunity and progress intersect here

BENNINGTON INDUSTRIAL PARK

Interstate 71 at
State Route 61
Morrow County, Ohio

Columbus: 30 miles
Cleveland: 110 miles
Cincinnati: 135 miles
Dayton: 100 miles
Toledo: 125 miles

- Shovel ready
- 1.2 million workers within 40 minutes
- Tax and enterprise zone incentives
- Existing commercial development
- Favorable real property taxes;
no personal property taxes

Learn more, contact:
Morrow County Development Office
Patricia Davies
419.947.9535
daviesp@rrohio.com

BENNINGTON INDUSTRIAL PARK

Utilities

Water – 750,000-gallon storage tank adjacent to the park

Sewer – 350,000-gallon/day capacity

Natural gas – 250 million BTUs/hour

Electric – 12.5-69KV

Utility providers

Consolidated Electric

Bright Energy (Natural Gas)

Touchstone Energy Cooperatives

800.421.5863

www.consolidatedelectric.coop

Omnicity Corp. (Internet provider)

800.447.3055

www.omnicity.com

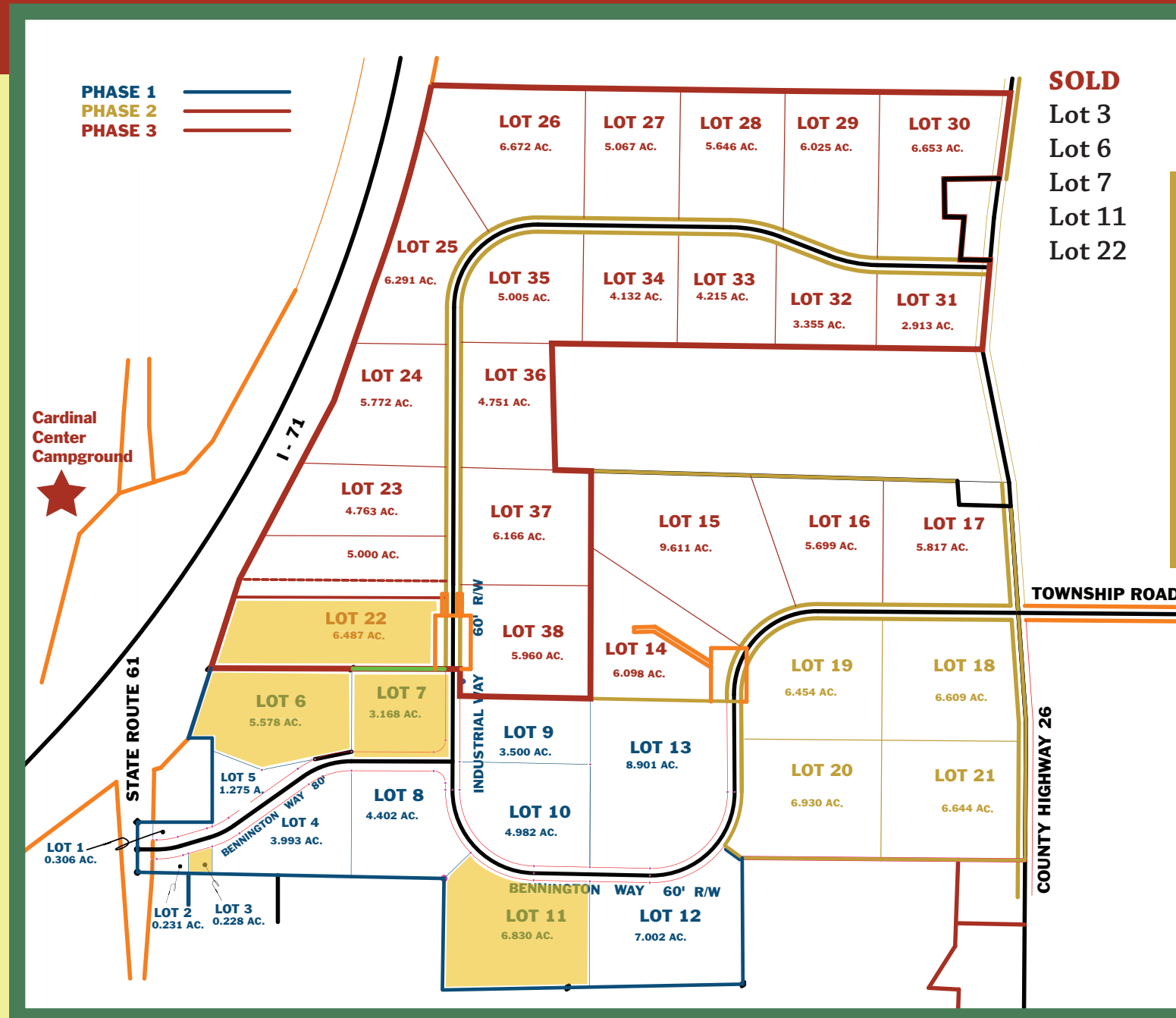
Delco Water, Inc.

419.253.6003

www.delcowater.com

Somoco Sanitary, Inc.

419.253.6031



Total size
 280+ acres
 (phase 1 is 50 acres)

Lot sizes
 5 acres
 (can divide or combine)
 Storm water

Learn more, contact:
 Morrow County Development Office
 Patricia Davies
 419.947.9535
daviesp@rroho.com

About Morrow County

Morrow County is located in Central Ohio, just north of Columbus. It's ideally located for *commercial* and *industrial development*:

- Two shovel-ready commercial and industrial parks
- Two major interchanges and direct access to U.S. 42 and U.S. 23
- A labor force of 1.2 million within 40 minutes
- Tax and enterprise zone incentives
- Airport that accommodates aircraft up to and including small turbo-prop planes
- Favorable real property tax rates; no personal property taxes in Ohio
- Close to it all: Ohio cities, recreation and sporting areas

With a population of 35,000, we're proud of our county's rural lifestyle and an agriculture industry over \$50-million. In addition, we value the county's diverse manufacturing firms that include Cardington Yutaka Technologies (supplier to Honda of America) and Core Systems (plastic injection molding parts). We're also home to **Mount Gilead State Park**, **Mid Ohio Sports Car Course** and the **Cardinal Center Campground Trapshooting Facility**.

We welcome the opportunity to help you open or expand a commercial or industrial business. Please contact Economic Development Director **Patricia Davies** at 419.947.7535 or daviesp@rr.ohio.com.

Morrow County Development Office

80 N. Walnut Street, Suite B
Mt. Gilead, Ohio 43338
419.947.7535 *talk* 419.947.7686 *fax*

MORROW COUNTY
Love life. Live rural.

Opportunity and progress intersect here

MORROW MEADOWS INDUSTRIAL PARK

Interstate 71 at
State Route 95
Morrow County, Ohio

Columbus: 45 miles
Cleveland: 100 miles
Cincinnati: 145 miles
Dayton: 110 miles
Toledo: 120 miles

- Shovel ready
- 1.2 million workers within 40 minutes
- Tax and enterprise zone incentives
- Existing commercial development
- Favorable real property taxes; no personal property taxes

Learn more, contact:
Morrow County Development Office
Patricia Davies
419.947.9535
daviesp@rr.ohio.com

MORROW MEADOWS INDUSTRIAL PARK

Existing commercial

- A. Wendy's
- B. Marathon Service Station & Mini Mart
- C. Gathering Inn Restaurant
- D. McDonald's
- E. BP Station & Mini Mart
- F. Subway 95
- G. Shell Station & Mini Mart
- H. State Highway Department Garage
- I. Best Western Hotel
- J. Ohio State Highway Patrol

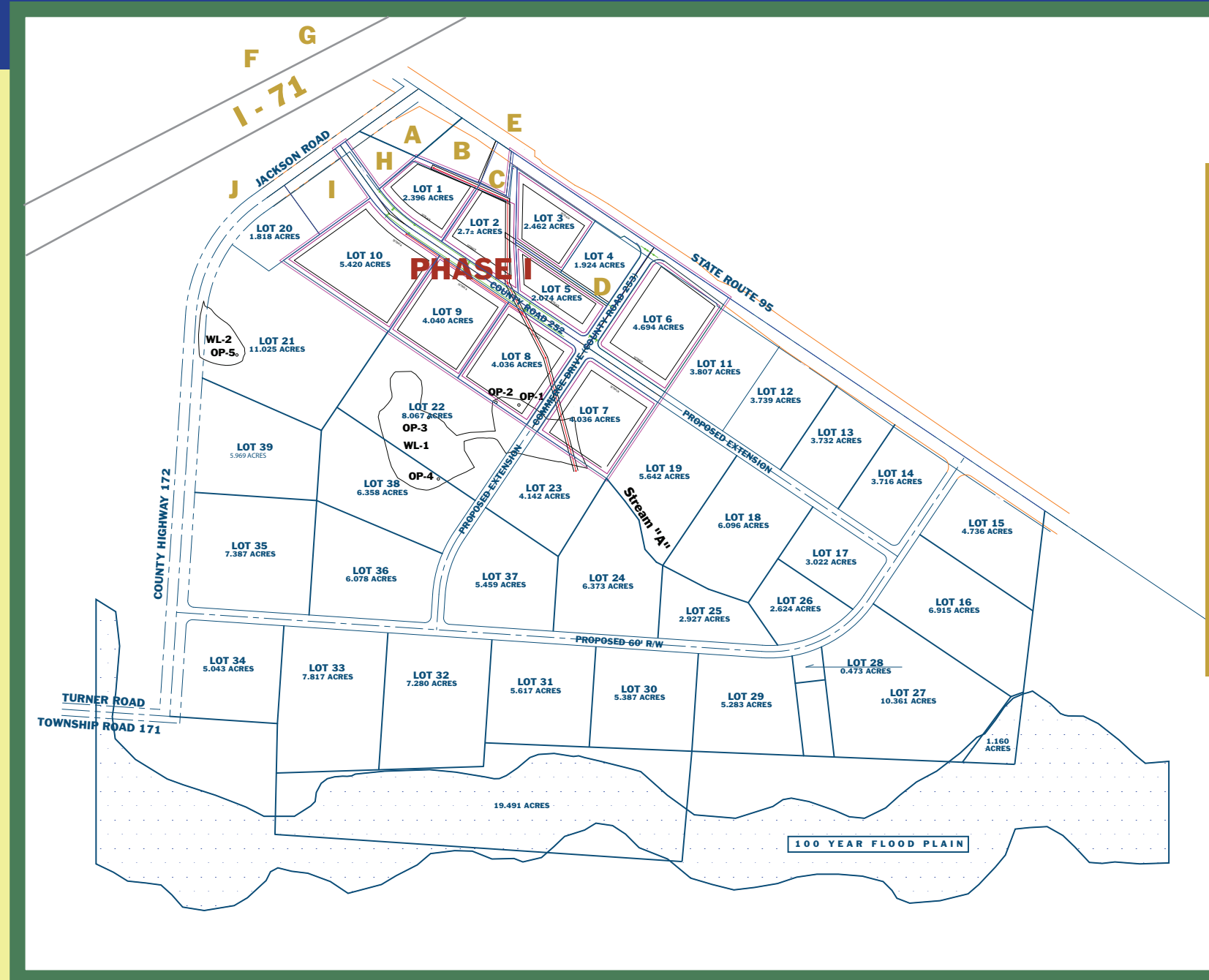
Utility providers

Consolidated Electric
Bright Energy (Natural Gas)
Touchstone Energy Cooperatives
800.421.5863
www.consolidatedelectric.coop

Omnicity Corp. (Internet provider)
800.447.3055
www.omnicity.com

Delco Water, Inc.
419.253.6003
www.delcowater.com

Wenmor Development, Inc. (sewer)
419.253.4031



Total size
225+ acres

Lot sizes
1+ acres - 11 acres
(can divide or combine)

**State Route 95
Frontage**
3200 feet

Learn more, contact:
Morrow County Development Office
Patricia Davies
419.947.9535
daviesp@rohio.com